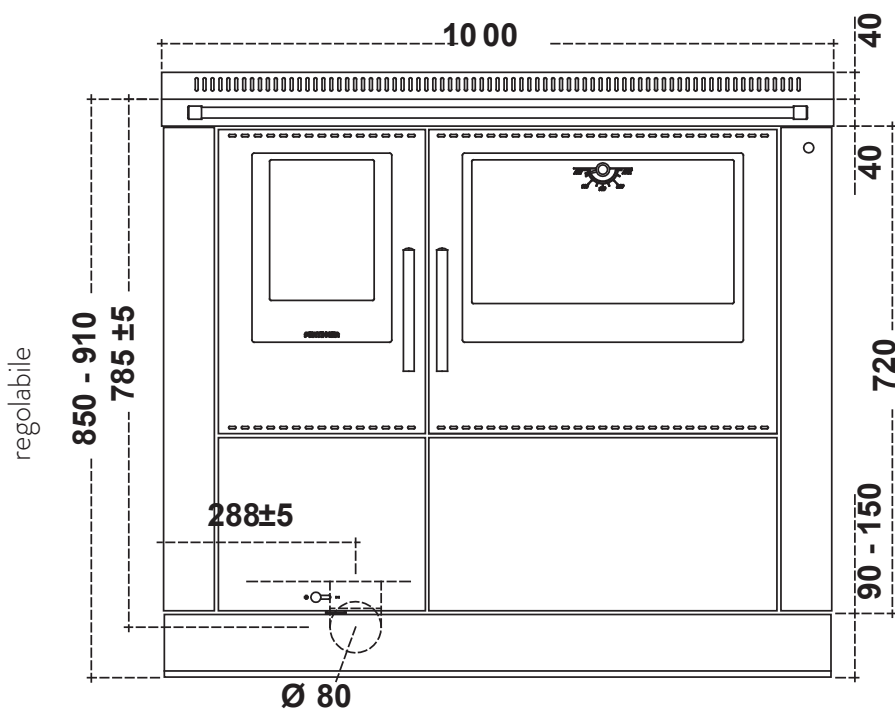
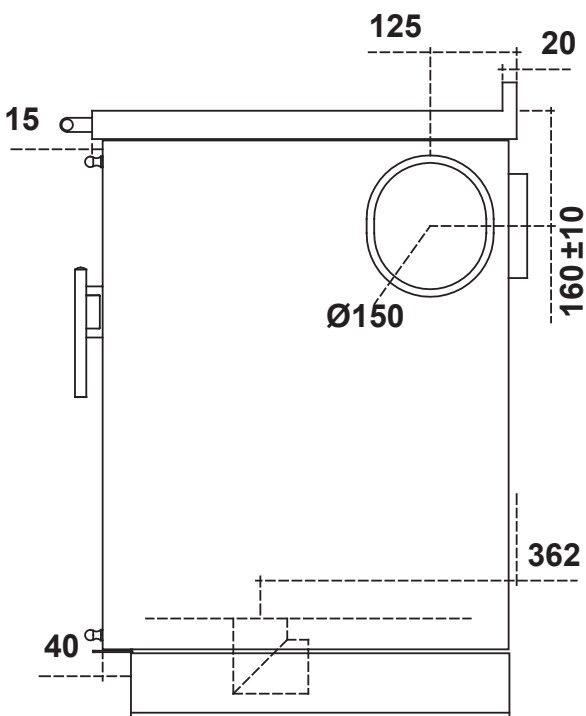
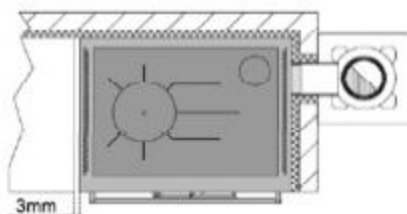
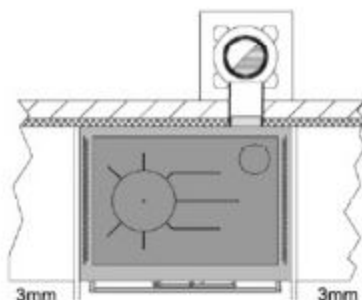
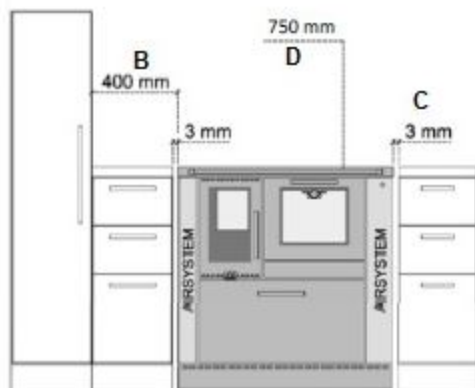


Technical drawing of the top view of a rectangular table. The table has a width of 73 ± 5 and a length of 1000. The top surface is 145 wide and 135 high. The table has a central circular area with a diameter of Ø150 and a 120° angle. There are two circular holes, one red and one blue, and two small circular holes. The table has a decorative border and a central panel.



 KOALPIN 100

N  Test report: IMQ-CPD-11-025



Paroi lignifug e

* 40 mm d'isolant avec une conductivit  thermique  gale   0.07 W/mK   200 C y compris 10 mm de vide d'air ventil  entre les parois

Distance de s curit  par rapport aux mat riaux inflammables :

- Distance minimale des parois inflammables arri res et lat rales autour de l'appareil ( paisseur de l'isolation).
- Distance minimale aux mat riaux inflammables au-dessus de la plaque et lat rale
- Distance minimale pour l'encastrement (sous la plaque)
- Distance minimale des parois inflammables au-dessus de la plaque
- Distance minimale des parties inflammables devant la cuisini re

A = 50 mm

B = 400 mm

C = 3 mm

D = 750 mm

E = 1000 mm

Si sol combustible, protection m tallique ou autre sous la cuisini re et 40 cm devant.

Le plan de travail devra  tre incombustible (pierre ou granit)



ENERG

енергия · ενεργεια

Y

IJA

IE

IA

P

PERTINGER

Ökoalpin
HH 100 PLUS

A⁺⁺

A⁺

A

B

C

D

E

F

G

A⁺



8,0

kW



11,5

kW

ENERGIA · ЕНЕРГИЯ · ΕΝΕΡΓΕΙΑ · ENERGIJA · ENERGY · ENERGIE · ENERGI

2015/1186